

VOL. 5 | MAY 2022

THE BUTLER BEAT



📍 19 Rue Rix - Bedford - Qc - J0J 1A0
mosherp@etsb.qc.ca
morganc@etsb.qc.ca
Ph: 450-248-2090



what's inside

Dates to Remember
Reporting Absences
Drop off / Pickup Instructions
Hot Lunch
Ped Days/Reg School Days
Water Bottles
Gym Clothes Reminder
Massey Vanier Orientation
Field Trips
Graduations
Extra Curricular/Homework Club schedule
Mother Goose Program
Caisse School
BHSA News
Butler Gear/Toro Graphics
21-22 School Calender
22-23 School Calender

BELL SCHEDULE

- Bus Arrival - 7:55
- Homeroom - 8:00 to 8:05
- Recess - 10:05 to 10:25
- Lunch - 11:25 to 12:15
- Recess - 1:15 to 1:35
- Dismissal - 2:35 to 2:40
- Bus Departure - 2:50



BUTLER ELEMENTARY SCHOOL



DATES TO REMEMBER

May 3rd - Transition to Massey Vanier

Visit at MV/ Grade 6 & 7 Students

May 9th - Swim To Survive

Grade 3 & 4 Students

May 20th - Regular School Day

May 23rd - Victoria Day - NO SCHOOL

June 3rd - Regular School Day

June 9th - Granby Zoo

Pre-K & Kindergarten

June 16th - Graduation

Kindergarten / Students attending MV 22-23

June 17th - Farm Visit

Grade 1&2 Students

June 20th & 21st - Camping in Coaticook

Grade 5-6-7 Students

Reporting Absences

Please notify the school if your child is absent by:

- Call 450-248-2090 option 1 (report an absence)
- Email: Mosherp@etsb.qc.ca
- Include Child's name
-Grade or Teacher
-Reason for absence



Changes to After School Pickup

Notify office by 1pm

450-248-2090

mosherp@etsb.qc.ca



Student Drop off and Pick Up

A parent or family member must drop off or collect their child at the gate to the playground and must be wearing a mask once on school property.

Please continue to park on Victory Blvd.

No Vehicles will be allowed to enter the staff parking lot for pickup or drop off.



Hot Lunch CAFÉ ROUGE

MENU

May 2022



- Wednesday May 4th Gyro Burger
- Thursday May 5th Chicken fingers
- Friday May 6th Fish Tacos
- Monday May 9 Spaghetti and meat sauce
- Tuesday May 10 Mini pepperoni pizza
- Wednesday May 11 Spaghetti and meat balls
- Thursday May 12 Chicken Burger
- Friday May 13 Salmon in rose
- Monday May 16 Tex-Mex Tacos
- Tuesday May 17 Pogo
- Wednesday May 18 Chili Hot dogs
- Thursday May 19th Meat loaf
- Friday May 20 Fish burger
- Monday May 23 No school
- Tuesday May 24 Penne and rose sauce
- Wednesday May 25 Cheeseburger
- Thursday May 26 Ham and cheese quiche
- Friday May 27 Fish sticks
- Monday May 30 Sloppy Joes
- Tuesday May 31 Chicken Quesadillas

**Please submit all orders and payments by
Friday, April 29th.**

REMINDER

-Friday, June 3rd
No longer PED Day
Converted back to Regular School Day.



Water Bottles

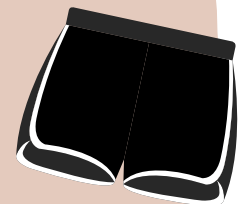
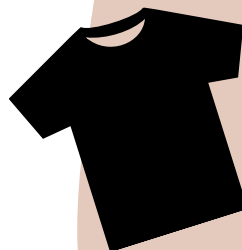
PLEASE REMEMBER TO SEND YOU CHILD
WITH A FULL RE-FILLABLE WATER BOTTLE
EVERY DAY!

TWO FILLING STATIONS ARE AVAILABLE



Gym Clothes Reminder

Gym clothes are mandatory for grade 3 & up



Massey Vanier In Person Visit

Tuesday, May 3rd, 2022

WHO: SECONDARY 1 & GRADE 6 STUDENTS ATTENDING MASSEY VANIER NEXT YEAR.

WHY: THIS WILL GIVE THE STUDENTS THE OPPORTUNITY TO VISIT THEIR FUTURE CLASSROOMS AND SPEAK WITH DIFFERENT STAFF MEMBERS THEY WILL SEE NEXT YEAR.

HOW: TRANSPORTED BY BUS FROM BUTLER TO MASSEY VANIER AND BACK.

Field Trips

Pre-K & Kindergarten
Granby Zoo
Thursday, June 9th

Grade 1 & 2
Farm Visit
Friday, June 17th

Grade 3 & 4
Old Port Montreal
Date to be determined

Grade 5 - 6 - 7
Monday, June 20th To Tuesday, June 21st
Camping Parc de la Gorge de Coaticook

Graduations

CONGRATS
GRAD

Please take note that on June 16th we will be hosting both the Kindergarten and senior student graduation. Kindergarten graduation will start at 4:00 and be open to immediate family. Our senior graduation will take place at 6:30 with a limit of 4 tickets per graduating student. A dance will follow for senior students wishing to participate.

Weather permitting it will be outdoor ceremonies. Book your calendars now to help us celebrate these important milestones!

--
Christopher Morgan

Butler Elementary Principal
Eastern Townships School Board

Save
the Date
June 16, 2022

Kindergarten --- 4:00pm
Secondary 1 & Grade 6 --- 6:30pm

Congrats!

2021-2022

Butler Graduates

Extra Curricular Activities

Band
Mr. Tetreault
Practice: Thursdays 2:45-4:00pm



Homework Clubs



Ms. Blinn

Homework club: Mondays
Grade 5&7



Ms. Laduke/Ms.Fankhauser/ Ms. Plouffe

Homework Club: Wednesdays
Grade 3&4



The Parent Child Mother Goose Program

Spring session
April 3rd-June 12th 2022
(No class on April 17th)

Come join us for this
early literacy
program Sunday
mornings on Zoom
@9:00-10:00am

This program is for youngsters 0-4.
Come join us as we sing, laugh and
rhyme!

For registration
contact
Krista Steiche
steichek@edu.etsb.qc.ca

.Free
.Online
.Fun&Interactive
.Limited spaces



Desjardins
Caisse de la Pommerai

Invest in your child's future and teach them how to
start saving. Deposits are picked up weekly.

Visit www.caissescolaire.com for more information



**School
Caisse**

Work Hard

Be Kind

Develop Your Mind

Toro Graphix

450-242-1246

www.torographix.shop

- T-Shirts \$12 +tax
- Hoodie \$35 +tax
- Add a Name \$3 +tax

BUTLER ELEMENTARY

EST. 1969



T-SHIRT, Unisex
100% cotton
Purple or Black
YOUTH / ADULT S-M-L-XL
2XL(+2\$) 3XL(+3\$) 4XL(+4\$)
12.00\$ + taxes

ADD A NAME
ON THE SLEEVE!
3.00\$ + taxes



HOODIE, Unisex
100% cotton
Purple or Black
YOUTH / ADULT S-M-L-XL
2XL(+2\$) 3XL(+3\$) 4XL(+4\$)
35.00\$ + taxes

TORO GRAPHIX
www.torographix.shop

605C Ch. Knowlton Knowlton QC J0E1V0 450-242-1246

SIZES ARE SUBJECT TO FREQUENT BACK ORDERS DUE TO COVID. WE WILL CONTACT YOU IF THIS OCCURS.
TORO GRAPHIX WILL BE DELIVERING DIRECTLY TO THE SCHOOL ONCE YOUR ORDER IS READY

BHSA DREAM BIG

END OF YEAR CELEBRATION

Dream Big



Pizza Party



Poutine Day



Ice Cream

We would love your input, how
should we celebrate the end of the
school year?

Surveys will be sent home with
Students in the near future.

Don't forget to Dream Big!

Facebook : www.facebook.com/butlerhsa

Email : butlerhsa@gmail.com

Reminder !

2021-2022 BHSA FUNDRAISER

Chicken - Pork - Beef

Orders need to be returned before Thursday May 12th

Delivery

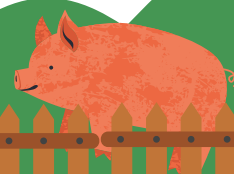
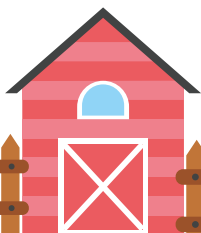
When: Thursday May 26th -2pm to 6pm

Where: Butler - outdoor classroom

Chicken - Pork - Beef
FUNDRAISER



BUTLER
HOME & SCHOOL
ASSOCIATION



2021-2022

CALENDAR

BUTLER ELEMENTARY SCHOOL



ENSEIGNANT (Secteur des jeunes)
TEACHER (Youth sector)

CALENDRIER
SCOLAIRE

2021 - 2022

SCHOOL
CALENDAR

Juillet 2021			July		
DIM/SUN	LUN/MON	MAR/TUE	MER/WED	JEU/THU	VEN/FRI
				1	2
4	5	6	7	8	9
11	12	13	14	15	16
18	19	20	21	22	23
25	26	27	28	29	30

Août 2021			August		
DIM/SUN	LUN/MON	MAR/TUE	MER/WED	JEU/THU	VEN/FRI
1	2	3	4	5	6
8	9	10	11	12	13
15	16	17	18	19	20
22	23	24	25	26	27
29	30	31			

Septembre 2021			September		
DIM/SUN	LUN/MON	MAR/TUE	MER/WED	JEU/THU	VEN/FRI
			1	2	3
5	6	7	8	9	10
12	13	14	15	16	17
19	20	21	22	23	24
26	27	28	29	30	

Octobre 2021			October		
DIM/SUN	LUN/MON	MAR/TUE	MER/WED	JEU/THU	VEN/FRI
				1	2
3	4	5	6	7	8
10	11	12	13	14	15
17	18	19	20	21	22
24	25	26	27	28	29
31					

Novembre 2021			November		
DIM/SUN	LUN/MON	MAR/TUE	MER/WED	JEU/THU	VEN/FRI
	1	2	3	4	5
7	8	9	10	11	12
14	15	16	17	18	19
21	22	23	24	25	26
28	29	30			

Décembre 2021			December		
DIM/SUN	LUN/MON	MAR/TUE	MER/WED	JEU/THU	VEN/FRI
			1	2	3
5	6	7	8	9	10
12	13	14	15	16	17
19	20	21	22	23	24
26	27	28	29	30	31

Janvier 2022			January		
DIM/SUN	LUN/MON	MAR/TUE	MER/WED	JEU/THU	VEN/FRI
					1
2	3	4	5	6	7
9	10	11	12	13	14
16	17	18	19	20	21
23	24	25	26	27	28
30	31				

Février 2022			February		
DIM/SUN	LUN/MON	MAR/TUE	MER/WED	JEU/THU	VEN/FRI
		2	3	4	5
6	7	8	9	10	11
13	14	15	16	17	18
20	21	22	23	24	25
27	28	29			

Mars 2022			March		
DIM/SUN	LUN/MON	MAR/TUE	MER/WED	JEU/THU	VEN/FRI
			2	3	4
6	7	8	9	10	11
13	14	15	16	17	18
20	21	22	23	24	25
27	28	29	30	31	

Avril 2022			April		
DIM/SUN	LUN/MON	MAR/TUE	MER/WED	JEU/THU	VEN/FRI
					1
3	4	5	6	7	8
10	11	12	13	14	15
17	18	19	20	21	22
24	25	26	27	28	29

Mai 2022			May		
DIM/SUN	LUN/MON	MAR/TUE	MER/WED	JEU/THU	VEN/FRI
1	2	3	4	5	6
8	9	10	11	12	13
15	16	17	18	19	20
22	23	24	25	26	27
29	30	31			

Juin 2022			June		
DIM/SUN	LUN/MON	MAR/TUE	MER/WED	JEU/THU	VEN/FRI
			1	2	3
5	6	7	8	9	10
12	13	14	15	16	17
19	20	21	22	23	24
26	27	28	29	30	

180 Journées de classe
School Days

17 3 Journées pédagogiques
Planning Days

22 Congés
Non-Working days (Holidays)

3¹ Journées pédagogiques pouvant devenir jours de classe
Planning days which may convert to a school day

★ Premier jour de classe
First day of class

3 Journées pédagogiques(enseignants)
Teacher planning days

Adopté par Résolution - le 23 mars 2021
Adopted by Resolution - March 23, 2021

➡ Converted to Regular School Days

15 Congrès APEQ (journée pédagogique)
QPAT Convention (planning day)

2022-2023

CALENDAR

BUTLER ELEMENTARY SCHOOL



ENSEIGNANT (Secteur des jeunes)
TEACHER (Youth sector)

CALENDRIER
SCOLAIRE

2022 - 2023

SCHOOL
CALENDAR

Juillet 2022 July						
DIM/SUN	LUN/MON	MAR/TUE	MER/WED	JEU/THU	VEN/FRI	SAM/SAT
					1	2
3	4	5	6	7	8	9
10	11	12	13	14	15	16
17	18	19	20	21	22	23
24	25	26	27	28	29	30
31						

Août 2022 August						
DIM/SUN	LUN/MON	MAR/TUE	MER/WED	JEU/THU	VEN/FRI	SAM/SAT
	1	2	3	4	5	6
7	8	9	10	11	12	13
14	15	16	17	18	19	20
21	22	23	24	25	26	27
28	29	30	31			

Septembre 2022 September						
DIM/SUN	LUN/MON	MAR/TUE	MER/WED	JEU/THU	VEN/FRI	SAM/SAT
				1	2	3
4	5	6	7	8	9	10
11	12	13	14	15	16	17
18	19	20	21	22	23	24
25	26	27	28	29	30	

Octobre 2022 October						
DIM/SUN	LUN/MON	MAR/TUE	MER/WED	JEU/THU	VEN/FRI	SAM/SAT
						1
2	3	4	5	6	7	8
9	10	11	12	13	14	15
16	17	18	19	20	21	22
23	24	25	26	27	28	29
30	31					

Novembre 2022 November						
DIM/SUN	LUN/MON	MAR/TUE	MER/WED	JEU/THU	VEN/FRI	SAM/SAT
		1	2	3	4	5
6	7	8	9	10	11	12
13	14	15	16	17	18	19
20	21	22	23	24	25	26
27	28	29	30			

Décembre 2022 December						
DIM/SUN	LUN/MON	MAR/TUE	MER/WED	JEU/THU	VEN/FRI	SAM/SAT
				1	2	3
4	5	6	7	8	9	10
11	12	13	14	15	16	17
18	19	20	21	22	23	24
25	26	27	28	29	30	31

Janvier 2023 January						
DIM/SUN	LUN/MON	MAR/TUE	MER/WED	JEU/THU	VEN/FRI	SAM/SAT
1	2	3	4	5	6	7
8	9	10	11	12	13	14
15	16	17	18	19	20	21
22	23	24	25	26	27	28
29	30	31				

Février 2023 February						
DIM/SUN	LUN/MON	MAR/TUE	MER/WED	JEU/THU	VEN/FRI	SAM/SAT
			1	2	3	4
5	6	7	8	9	10	11
12	13	14	15	16	17	18
19	20	21	22	23	24	25
26	27	28				

Mars 2023 March						
DIM/SUN	LUN/MON	MAR/TUE	MER/WED	JEU/THU	VEN/FRI	SAM/SAT
			1	2	3	4
5	6	7	8	9	10	11
12	13	14	15	16	17	18
19	20	21	22	23	24	25
26	27	28	29	30	31	

Avril 2023 April						
DIM/SUN	LUN/MON	MAR/TUE	MER/WED	JEU/THU	VEN/FRI	SAM/SAT
						1
2	3	4	5	6	7	8
9	10	11	12	13	14	15
16	17	18	19	20	21	22
23	24	25	26	27	28	29
30						

Mai 2023 May						
DIM/SUN	LUN/MON	MAR/TUE	MER/WED	JEU/THU	VEN/FRI	SAM/SAT
	1	2	3	4	5	6
7	8	9	10	11	12	13
14	15	16	17	18	19	20
21	22	23	24	25	26	27
28	29	30	31			

Juin 2023 June						
DIM/SUN	LUN/MON	MAR/TUE	MER/WED	JEU/THU	VEN/FRI	SAM/SAT
				1	2	3
4	5	6	7	8	9	10
11	12	13	14	15	16	17
18	19	20	21	22	23	24
25	26	27	28	29	30	

180 Journées de classe
School Days

17 3 Journées pédagogiques
Planning Days

22 Congés
Non-Working days (Holidays)

3¹ Journées pédagogiques pouvant devenir jours de classe
Planning days which may convert to a school day

★ Premier jour de classe
First day of class

3 Journées pédagogiques(enseignants)
Teacher planning days

Adopté par Résolution - le 22 mars 2022
Adopted by Resolution - March 22, 2022

14 Congrès APEQ (journée pédagogique)
QPAT Convention (planning day)